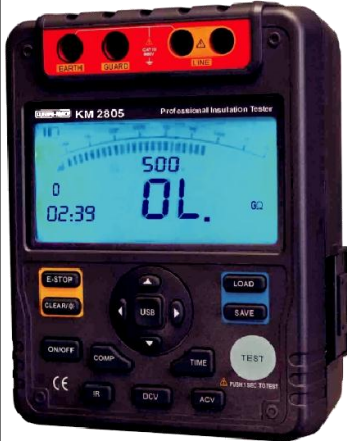
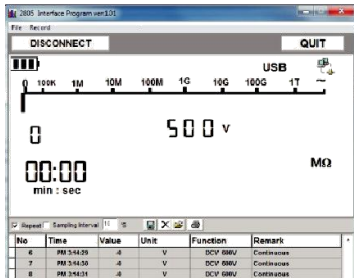


Model KM 2805

Model - KM 2805 Insulation Resistance Tester is a handheld instrument designed to measure Resistance / Insulation Resistance of LT/HT cables, Power & Distribution Transformers, Motors & Electric Control Panels.



Software CD



Software Screen



Test leads (10 meter)
OPTIONAL



Test leads (1.5 meter)



Software Cable

GENERAL SPECIFICATIONS :

- * **Display:** Digital 9999 Counts LCD Display with Analog Bar Graph.
- * **LCDSize:** 123 x 58mm
- * **Backlight:** Bright blue backlight for clear readings even in poorly lighted areas.
- * **Autoranging**
- * **DataLogging & recall 18 points.**
- * **Overload Protection:** Display OL on Insulation Resistance Range. When the insulation resistance is more than the range of the tester.
- * **Operating Temperature:** -10°C ~ 40°C (14°F ~ 104°F)
- * **Storage Temperature:** -20°C ~ 60°C (-4°F ~ 152°F)
- * **RelativeHumidity:**
 - ≤85% @ -10°C~40°C below;
 - ≤90% @ -20°C ~ 60°C.
- * **CurrentConsumption:** Maximum : around 1.0A; Average : around 20mA
- * **Computer connection via USB interface**
- * **Autorelease voltage.**
- * **COMPMeasurement :** Use the compare function to set a pass / fail compare level for the insulation measurements.
- * **PIMeasurement :** Polarization Index is the ratio of insulation resistance. You can pre-set two point of times and automatically carry out the measurement
- * **Timer:** To carry out measurement by setting a specified time upto 15 minutes.
- * **Batteryindicator displays battery condition.**
- * **IconDisplay :** Equips with function and battery indicator icons.
- * **PowerSupply :** 1.5V (LR 14) x 8 batteries or power adaptor input Voltage 230V, 50/60Hz, 75mA (DC 14V, 1.0A)
- * **Dimension :** 202(H) x 155(W) x 94(L) mm
- * **Weight:** approx. 2kg (including battery)

OPTIONAL ACCESSORIES : 10 meter Test Lead .

SAFETY :

Certification : CE approved.
Compliances : IEC61010 CAT III 600V over voltage and double insulation standard.

ACCESSORIES :

Two pcs of plug Test Lead to one alligator clip (Black & Green), One pc of Two plugs Test Lead to alligator clip (Red), Batteries, User's manual, Tool Box, USB interface cable, Software, Power Adaptor.

ELECTRICAL SPECIFICATIONS: KM 2805

Accuracy : ± (% of reading + number of least significant digits) at 18°C to 28°C with relative humidity 45 ~ 75% RH.

INSULATION RESISTANCE MEASUREMENT

Output Voltage (DC)	500V	1000V	2500V	5000V
Display Range	0.5MΩ~20GΩ	2MΩ~40GΩ	5MΩ~100GΩ	100MΩ~1000GΩ
Open Circuit Voltage	DC 500V 0% ~ +20%	DC 1000V 0% ~ +20%	DC 2500V 0% ~ +20%	DC 5000V 0% ~ +20%
Test Current	1mA ~1.2mA @500k	0.1mA ~1.2mA @1M	0.1mA~1.2mA @2.5M	0.1mA~1.2mA @5M
Short Circuit Current	Less than 2.0mA			
Accuracy	100kΩ~100MΩ±(3%rdg+ 5dgt) 100MΩ~10GΩ±(5%rdg+ 5dgt) 10GΩ~100GΩ±(10%rdg+ 5dgt) Above 100GΩ±(20%rdg + 5dgt) Humidity : Below 50%			

VOLTAGE MEASUREMENT

	DC Voltage	AC Voltage
Measurement Range	±30V ~ ±600V	30V~ 600V(50/60Hz)
Resolution	1 V	
Accuracy	± (2%rdg + 5dgt) Among them 30 ~100V (50/60Hz)±(2%rdg + 8dgt)	

All Specifications are subject to change without prior notice