

PRO-PLUS

PRO-PLUS SF6 Gas Encapsulated RMU

comprising of Load Break Switch and Circuit Breaker combination suitable for 12 kV & 24 kV secondary distribution networks.

The compact system is metal enclosed design, hermetically sealed pressure system - gas tight for life.

The Isolator & Circuit Breaker are with horizontal arrangements of Poles and the Operating Mechanism outside the gas compartment. The poles and the mechanism are connected with a gas-tight sealing mechanism.

The Circuit Breaker is vacuum Interrupting device fitted in Gas Encapsulated Tank.

It is designed to ensure the highest level of personal safety and operational reliability. The degree of protection is also ensured to comply the international safety norms and standards. The compactness and esthetic of the RMU is considered to be the best of all in its category.

Applications

- ★ PRO-PLUS series is used in electrical distribution networks for control and protection of power equipment in the network areas such as
 - Secondary Sub Station
 - Chemical Industry
 - Mine & Steel Industry
 - Comercial Building Power Supply
 - Automation Industry

Salient Features

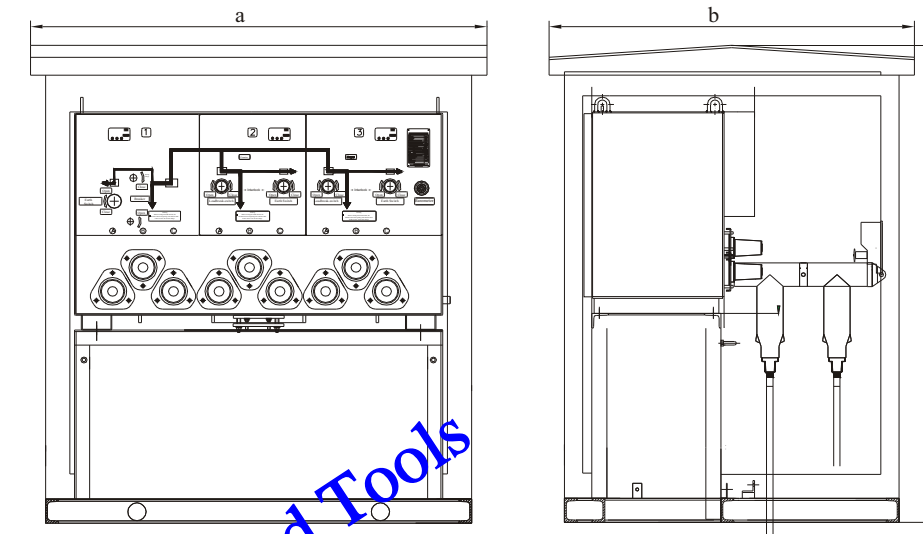
- ★ Designed for Safe & reliable operation even under very low gas pressure
- ★ Compact Metal clad construction with IP 5x protection
- ★ Flexible combination like load break switch, Circuit breaker or both as per the customers requirement
- ★ Perfect Environmental Adaptability to any adverse conditions like high temperature, humidity, and mine application etc.
- ★ Internal Arc Classified (IAC)
- ★ Safety of personal is ensured by interlock, sealing and with explosion protecting device.
- ★ Free maintenance of switchgear which ensure the performance of more than 20 years.
- ★ Extensibility of switchgear in future as per the customer requirement

Applicable Standards

IEC 60056 & IEC 60625
IEC 60298 & IEC 60129
IEC 60420 & IEC 60684

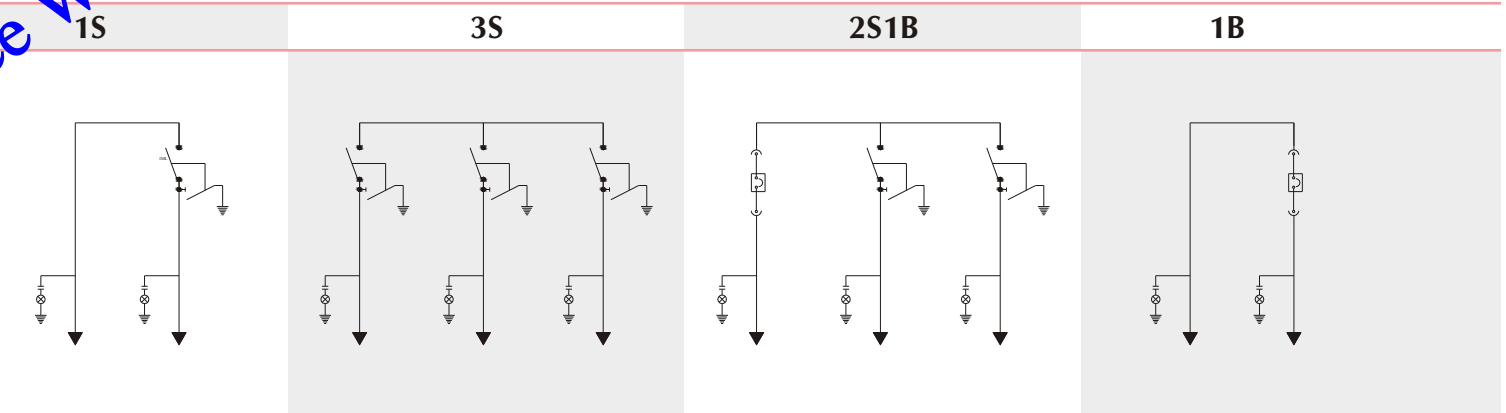
Accessories

- ★ Barometer
- ★ Counter
- ★ Charge Indicator
- ★ Phase checking Instrument
- ★ Fault Indicator
- ★ Operating handle



Dimensions		(in mm)		
Scheme	a	b	c	
1S	1350	800	1200	
3S	1400	900	1500	
2S1B	1400	930	1500	
1B	1250	830	1200	

Schematic Diagram



Technical Details

Description	Unit	Load Break Switch	Breaker
Rated Voltage	kV	12/24	12/24
Rated Current	A	630	630
Rated Frequency	Hz	50/60	50/60
Rated Breaking Current	A	630	-
Rated short circuit making Current	kA	65	65
Rated short time withstand Current	kA/s	25/3	25/3
One Min. P.F. withstand voltage	kV	32/70	32/70
Lightning impulse withstand voltage	kV	85/170	85/170
Mechanical Operations	Nos	5000	10000
Rated Gas Pressure	MPa	0.05	0.05
Min. Gas Pressure	MPa	0.01	0.01
Gas Leakage Rate per Year	%	< 0.01	< 0.01

